

MEISTER

Panels









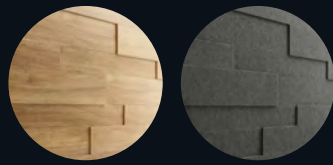
Cladding is a thing of the past!

...design is now! How do you like it? Stylish or cosy? Classic or trendy? Modern or conservative? Homeliness has many facets – just like the MEISTER wall and ceiling panels! They can be used to emphasise design features, and in a range of variants, too: from robust craft wood to elegant white, from cosy felt to modern metallic and concrete.

But panels aren't just a great design solution – MEISTER panels are well thought through down to the tiniest detail! What's more, every collection has very specific technical benefits that make their use a clever step in designing the perfect home. With the exception of the SP 800 (felt) and EP 500 (wood) collections, MeisterPanels are even suitable for humid rooms (away from areas directly exposed to splashing water). That means you can use them in bathrooms with an appropriate rear-ventilated substructure as well as in the kitchen. In addition, MeisterPanels. terra boast a proven anti-mould effect and are therefore the go-to option for bathrooms.

You can find everything you need to know about installing MeisterPanels at www.meister.com!





8

System panels

MeisterPanels. style SP 800

10

MeisterPanels. nova SP 300

24



38

Real wood panels

MeisterPanels. craft EP 500

40



54

Decorative panels

MeisterPanels. terra DP 250 | DP 200

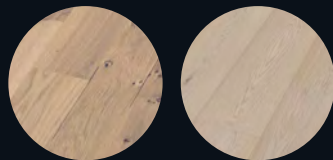
58

MeisterPanels. bocado DP 300 | DP 250 | DP 200

72

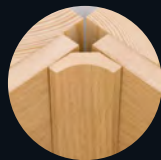
MeisterPanels. tertio DP 250 | DP 200

84



92

MeisterParquet. longlife and Lindura wood flooring on walls



96

Accessories



100

Lighting



System panels

MeisterPanels. style SP 800
MeisterPanels. nova SP 300





System panels

MeisterPanels. style

SP 800

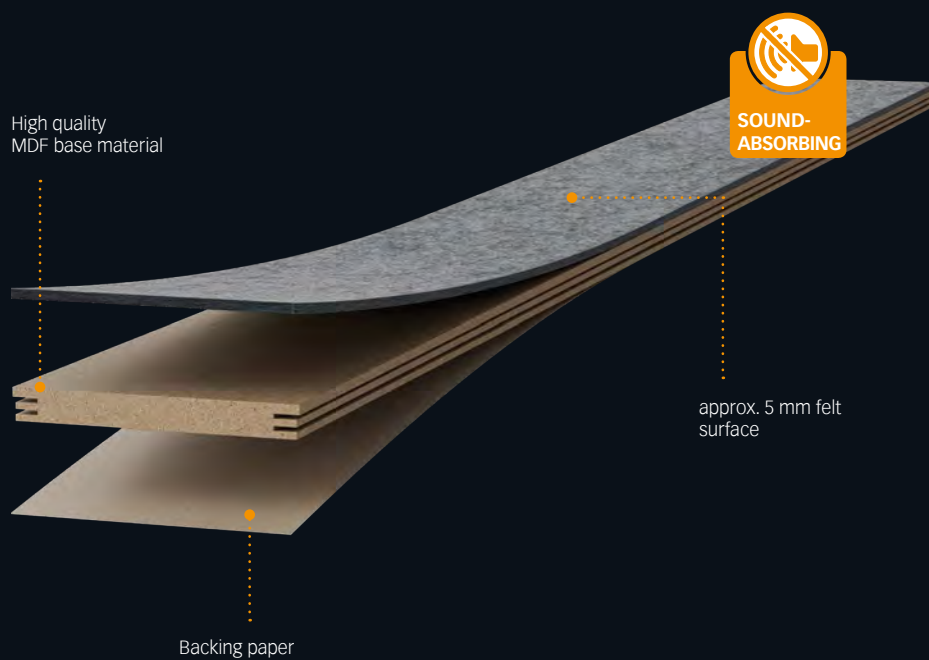
Stylish design meets heavenly peace!

Cosy felt, 100% vegan, made predominantly from recycled materials and in turn easy to recycle: the roughly 5 mm thick felt surface from MeisterPanels. style is a dream of sustainability and naturalness. Together with the MDF middle layer and a stabilising backing, it creates a wall and ceiling design element that leaves nothing to be desired. It is easy to handle and install, and also makes for cosy self-care corners or stylish areas with that wow effect! Felt complements other materials perfectly – especially when combined with light woods or metallic-looks, the felt plays to the optical advantages!

But MeisterPanels. style isn't just an attractive roommate – it also comes with technical finesse. The felt surface absorbs around 35% of noise in a room and thus makes for a pleasant atmosphere. Whether it's in the hubbub of the dining or living room, in your home office, playroom or children's bedroom, MeisterPanels. style creates islands of tranquillity – and subtly, too!

System panels

MeisterPanels. style SP 800



MeisterPanels. style SP 800

- | Groove and groove panel with offset joint
- | Approx. 5 mm felt surface
- | MDF base board E1
- | Absorber class D

- | Thickness: 14 mm
 - | 3 widths in the box: 80 | 100 | 120 mm
 - | Length: 840 mm
- Product protected by patent DE 102007007 620



www.blauer-engel.de/uz176



**MADE
IN
GERMANY**

Sound-absorbing

Especially in modern living environments that mostly do away with large-format textiles such as carpets or curtains, room noise can become a problem. After all, textile materials always help to reduce noise developing, and if they are completely absent to fit the aesthetic, it can get unpleasantly loud! MeisterPanels. style SP 800 makes for a simple and stylish remedy, as it absorbs 35% of noise (absorber class D as per DIN EN 11654) and thus provides a pleasant room atmosphere. Even just a partial installation on one wall is enough for a clearly tangible effect! Smaller sound-absorbing surfaces can also be installed on the ceiling. But regardless of which type of installation you go for, MeisterPanels. style is a winning combination of functionality and the perfect look!

Sustainable

The 100% vegan felt surface is made predominantly from recycled fibres: for the felt terra brown and felt olive decors it is 50% and for the three grey decors it's actually 100%. And to top it off, this felt is a real circular product and can easily be recycled once you are done with it!

Versatile

It's time for a change with the system panels MeisterPanels. style! The individual elements are available in three different widths, which, when used in combination, produce an attractive surface with a 3D effect!

MeisterPanels. style finds the perfect finish with new felt skirting boards! Both angled cover mouldings and self-adhesive narrow cover mouldings are available!





System panels

MeisterPanels. style SP 800



Basalt grey felt 4502



Quartz grey felt 4503



Slate grey felt 4504



Olive felt 4511



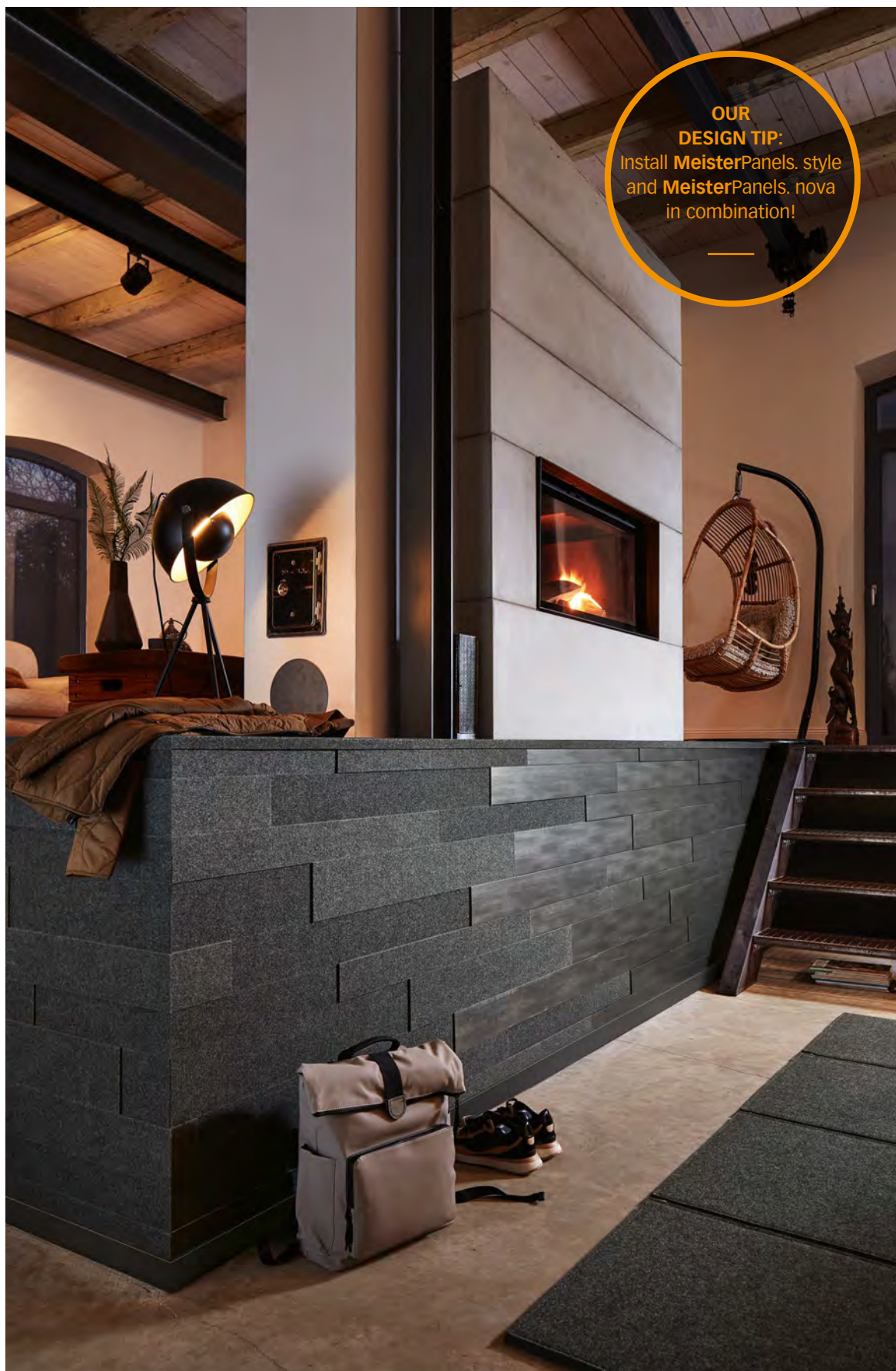
Terra brown felt 4515











OUR
DESIGN TIP:
Install **MeisterPanels. style**
and **MeisterPanels. nova**
in combination!





OUR
DESIGN TIP:
Install **MeisterPanels. style**
and **MeisterPanels. nova**
in combination!





System panels

MeisterPanels. nova

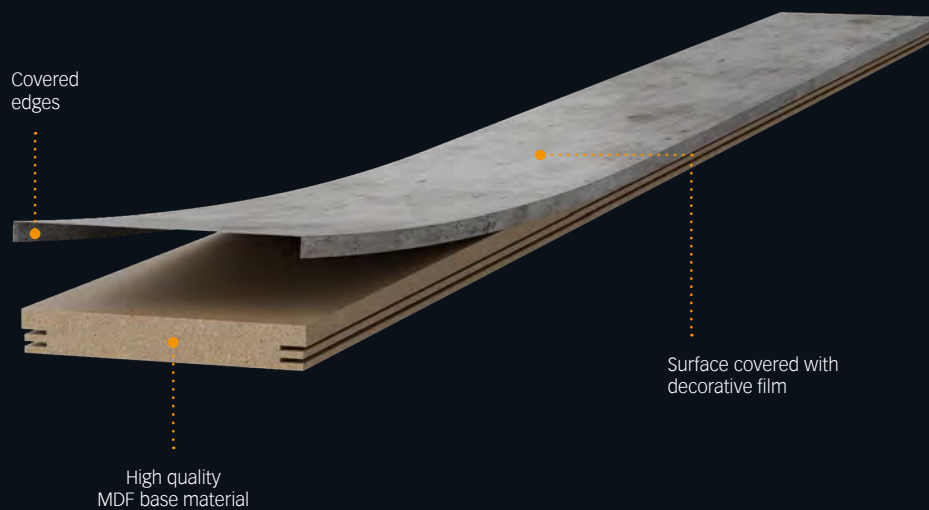
SP 300

Modern wall design in 3D

MeisterPanels. nova bring style to your everyday life! Their elegant surfaces and effective structures make walls an exceptional part of your home! And what an effect! Cool metallic, harmonious wood decor or modern design concrete look – the selection is extensive and leaves nothing to be desired. The special 3D effect is a result of the panel installation and is achieved in no time: thanks to the double groove, the individual elements in three different widths in the box are super easy to install offset!

System panels

MeisterPanels. nova SP 300



MeisterPanels. nova SP 300

- | Groove and groove panel with offset joint
- | With milled, finished head
- | Coated decorative or metallic film
- | MDF base board E1
- | Suitable for humid rooms

- | Thickness: 15 mm
- | 3 widths in the box: 80 | 100 | 120 mm
- | Length: 840 mm

Product protected by patent DE 102007007 620



Easy to clean

Decorative and metallic films don't just look perfect – they are also really easy to clean with a damp cloth and thanks to their complex, three-stage printing process, they boast a particularly high colour fastness.

High quality

The MDF E1 base board provides outstanding form stability and makes precise groove milling possible. What's more, the base boards with decorative films meet the lowest emissions limit specified.

Suitable for humid rooms

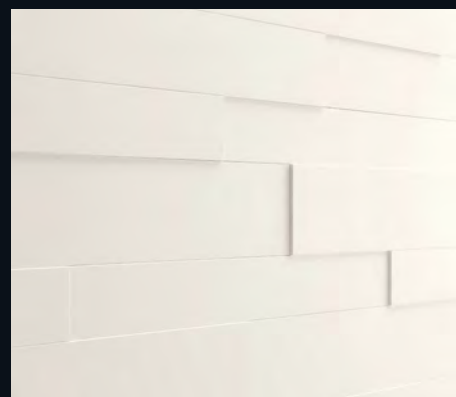
MeisterPanels. nova also make for special design effects in bathrooms and kitchens since they are suitable for humid rooms thanks to their high quality product structure.



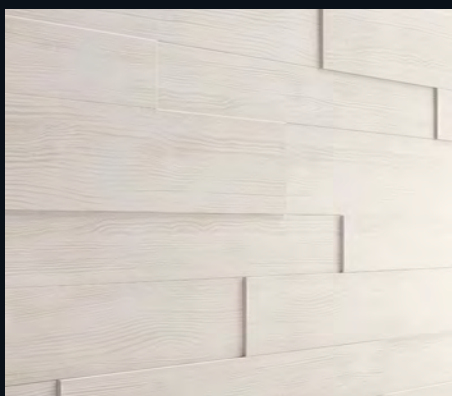
MeisterPanels. nova SP 300 | Oak 4046 | Wood effect

System panels

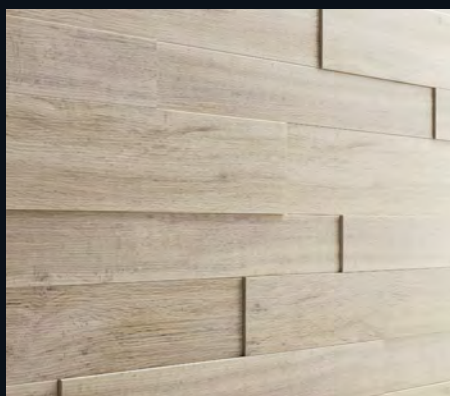
MeisterPanels. nova SP 300



White 4038 | Decor



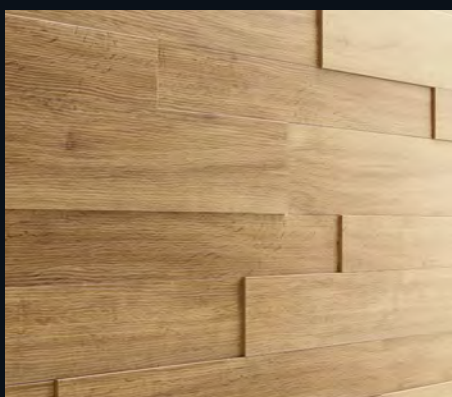
White pine 4005 | Wood effect



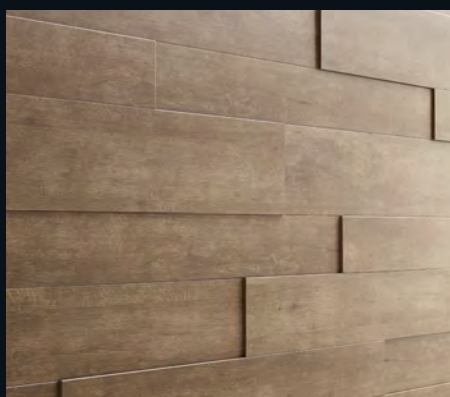
Cream grey rustic oak 4082 | Wood effect



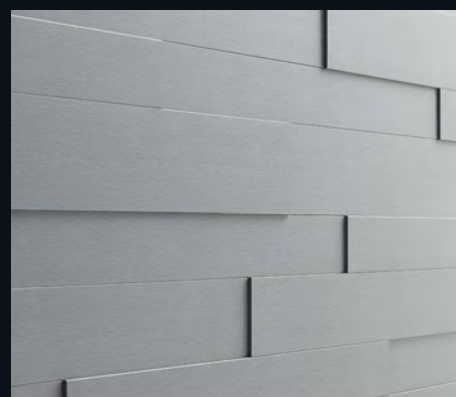
Concrete 4045 | Imitation



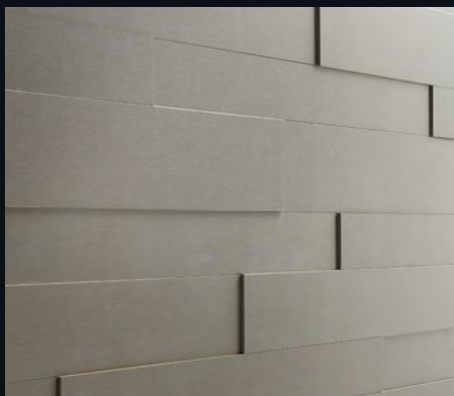
Rustic oak 4083 | Wood effect



Oak 4046 | Wood effect



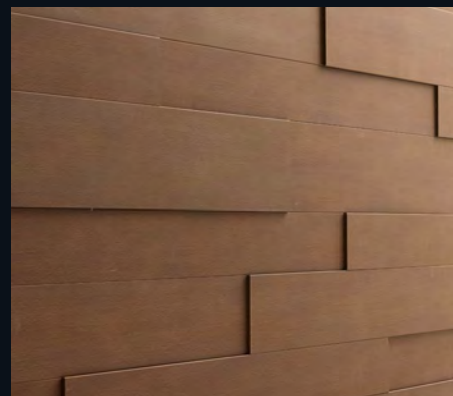
Aluminium metallic 4080 | Imitation



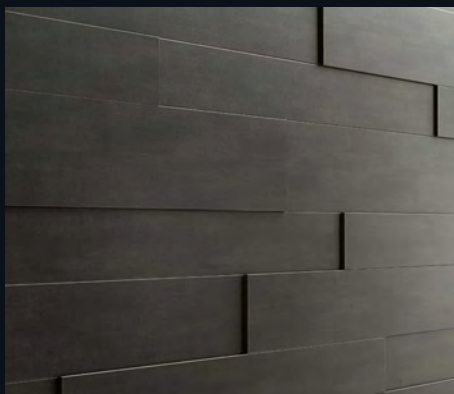
Stainless steel metallic 4079 | Imitation



Gold metallic 4081 | Imitation



Rust metallic 4077 | Imitation



Steel metallic 4078 | Imitation





OUR
DESIGN TIP:

Install **MeisterPanels. style**
and **MeisterPanels. nova**
in combination!

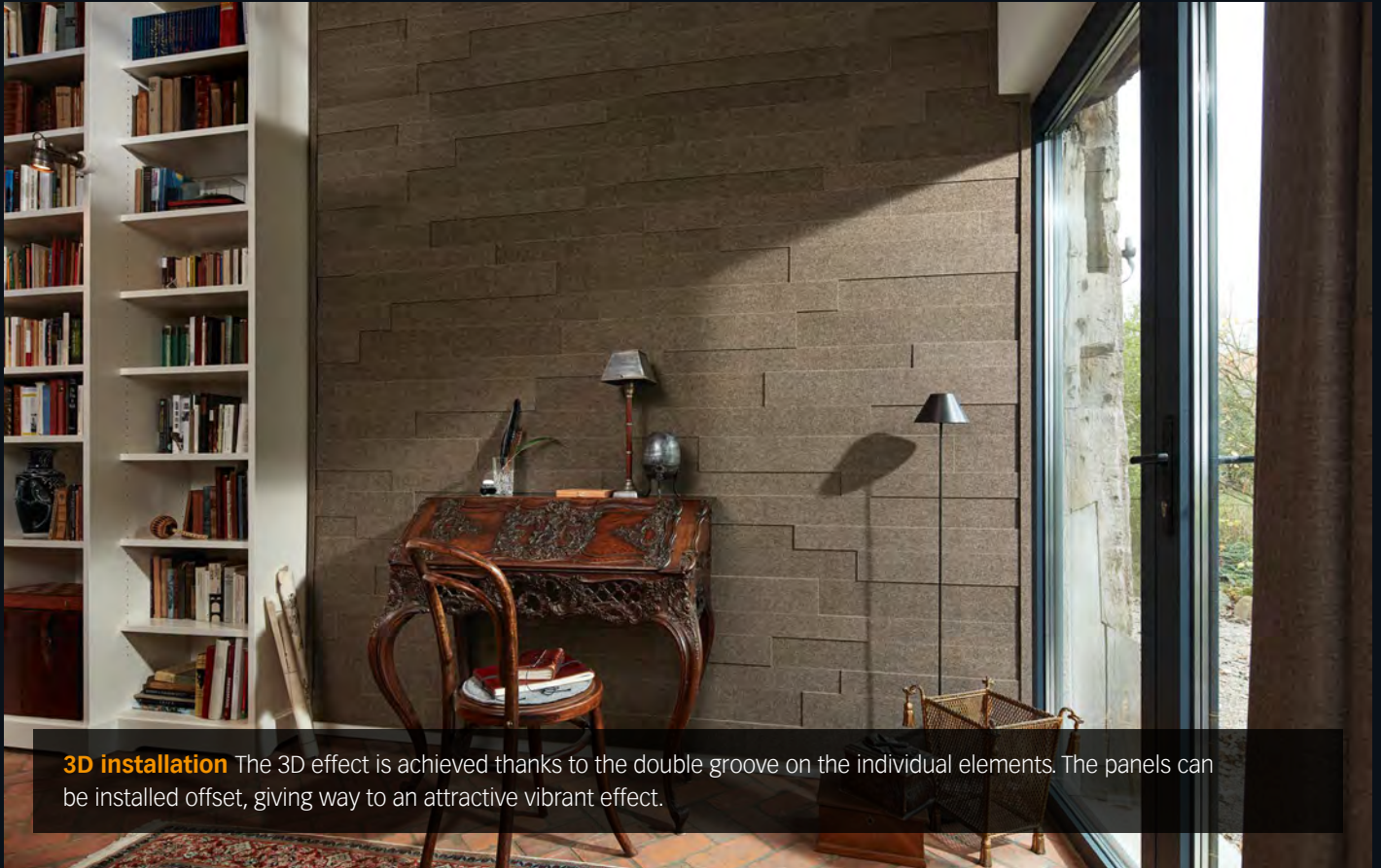




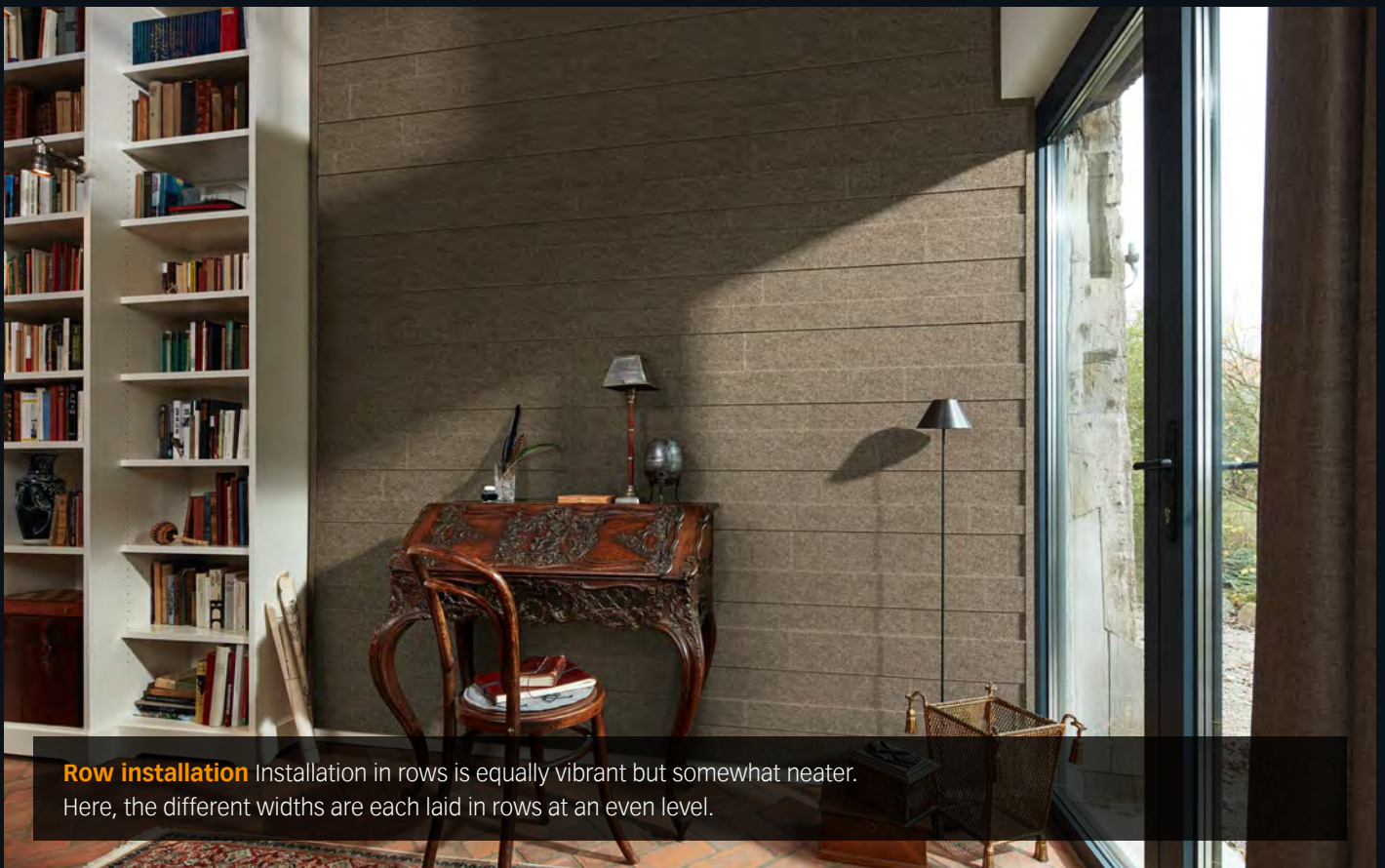




Beautifully varied! Multi-faceted types of installation

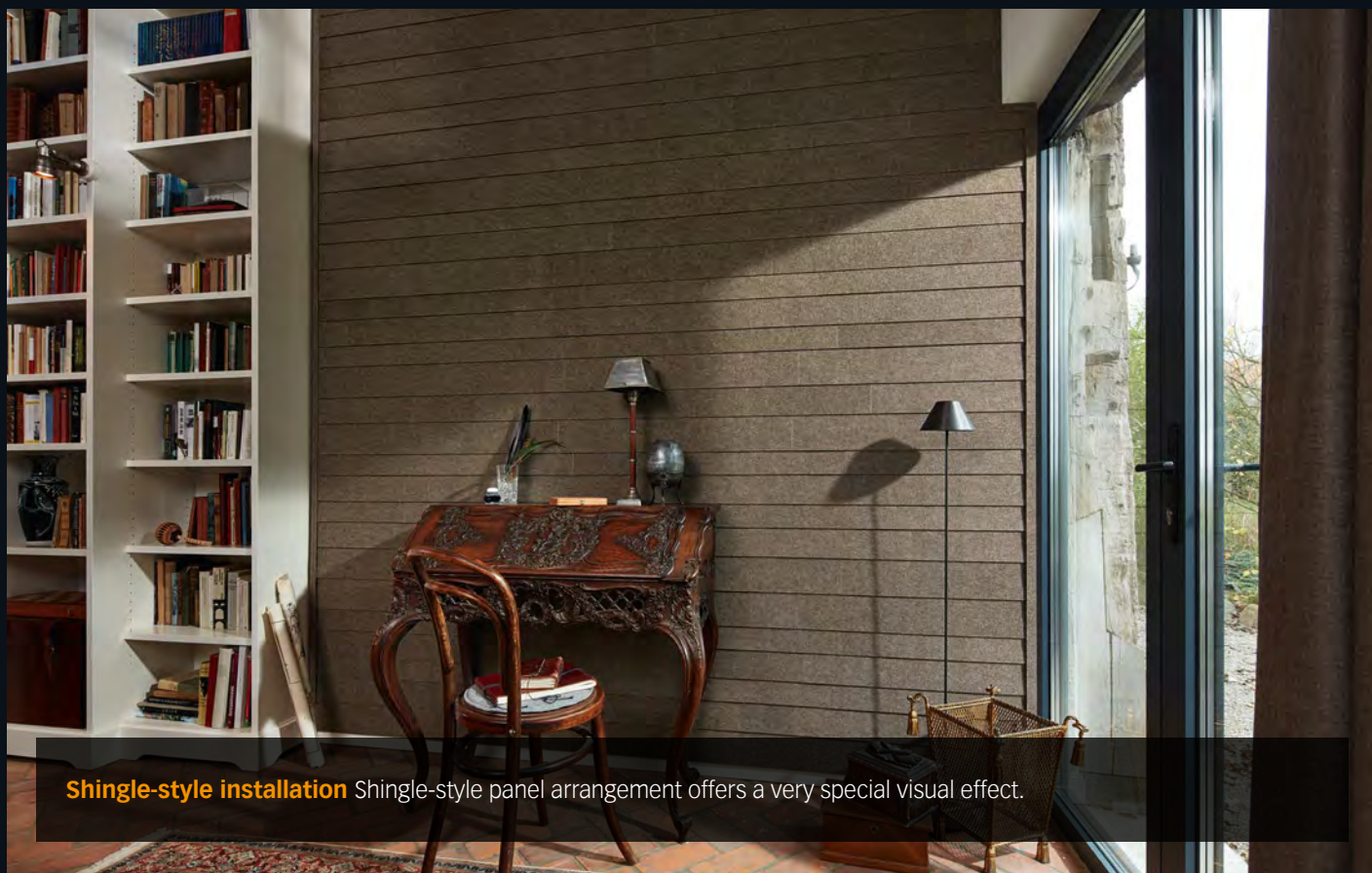


3D installation The 3D effect is achieved thanks to the double groove on the individual elements. The panels can be installed offset, giving way to an attractive vibrant effect.

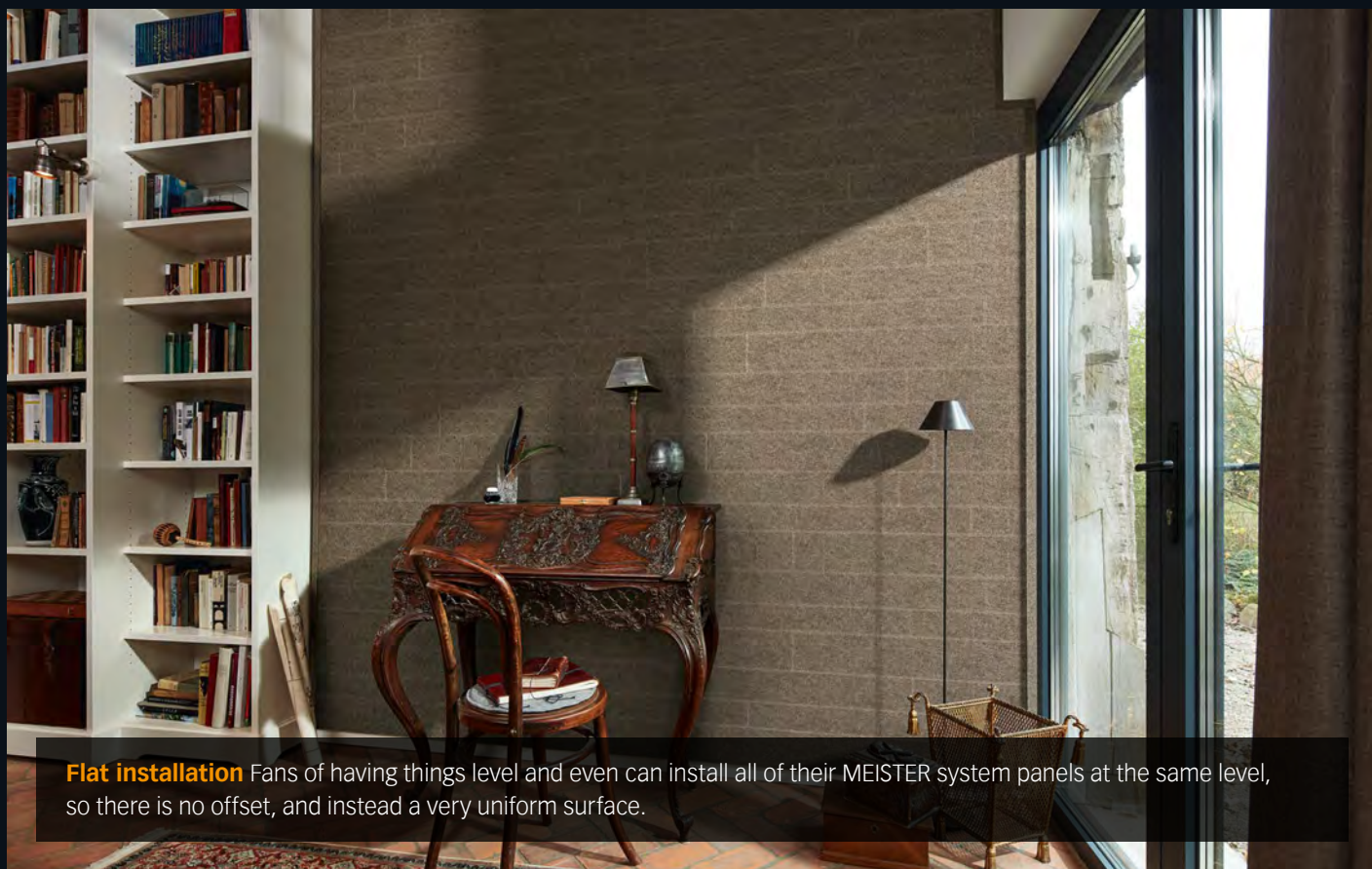


Row installation Installation in rows is equally vibrant but somewhat neater. Here, the different widths are each laid in rows at an even level.

MEISTER system panels can be installed in a range of ways, and each type of installation brings with it its very own visual effects. But regardless of which arrangement you go for, all of them can be laid either horizontally or vertically!



Shingle-style installation Shingle-style panel arrangement offers a very special visual effect.



Flat installation Fans of having things level and even can install all of their MEISTER system panels at the same level, so there is no offset, and instead a very uniform surface.



Real wood panels

MeisterPanels. craft EP 500



RAW LOOK:
For custom colour
schemes!



Real wood panels

MeisterPanels. craft

EP 500

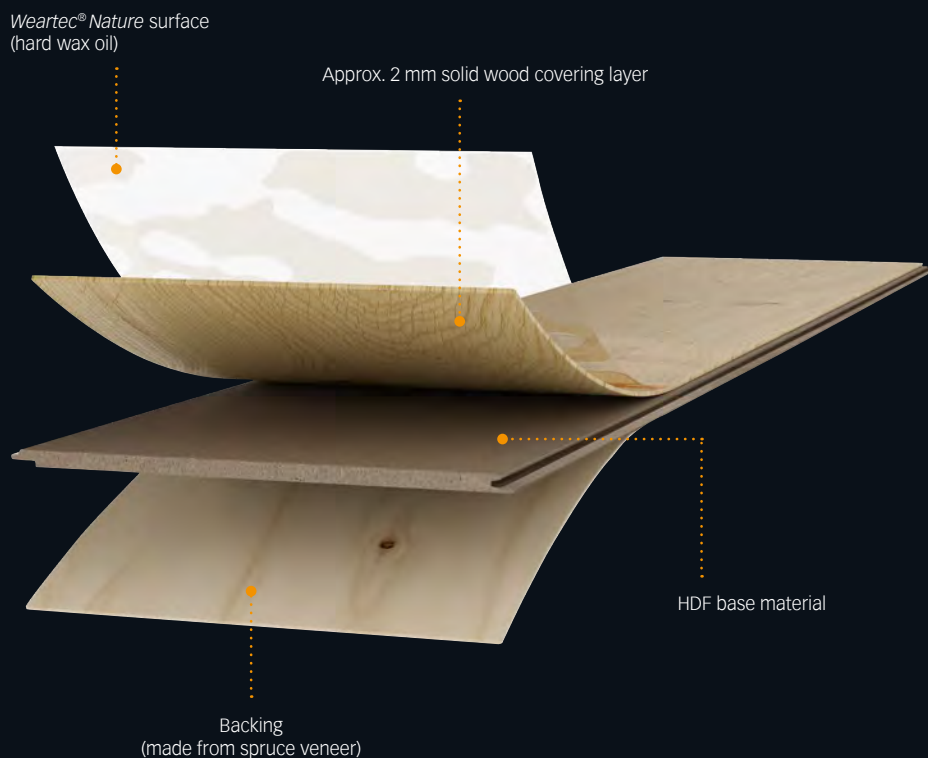
Robust wall and ceiling design with handcrafted features

Natural, robust, distinctive – with MeisterPanels. craft, anything goes! Deep cracks, knotholes, extreme brushing, vintage look, just “craft”! Because what is true for floor coverings also hits the mark when it comes to wall and ceiling design: nothing achieves atmosphere and naturalness in a room as quickly and effortlessly as real wood. The craft collection does just that, and to top it off, also brings an element of uniqueness to every room.

Not only is the practical short format easy to install, it also plays with colour to bring plenty of variety to your walls and ceilings. Made from high-quality hard wax oil, the *Weartec*® Nature surface provides the perfect finish and also makes the panels extremely easy to clean.

Real wood panels

MeisterPanels. craft EP 500



MeisterPanels. craft EP 500

| Tongue and groove panel with all-round V-bevel
 | Approx. 2 mm solid wood covering layer
 | Naturally oiled or
 raw (untreated) surface
 | HDF base board E1

| Thickness: 12 mm
 | Width: 160 mm
 | Length: 700 mm



RM 10-03

Protect and maintain: *Weartec® Nature*

Natural oils and waxes are the basis for our natural oil *Weartec® Nature*. It penetrates deep into the wood and forms a protective, breathable surface. This extra-matte, oxidatively dried type of finish creates a natural appearance with subtle brilliance, emphasises the grain as well as the structure, has a moisture-regulating effect and ensures a healthy living climate. If necessary, minor damage can be re-oiled and thus partially repaired with or without sanding the affected area.

Simple installation

Install the special touch for your home yourself, and in no time at all! There are three options available: installation on a wood batten; installation on the MEISTER batten profile type 8, either in metal or very simply with staple brackets (although the latter only applies to walls).

For individualists

Our tip for all those looking for something unique? The surface "raw" is super customisable: it can be oiled, painted or lacquered as you wish to achieve a room design like no other! You can find more at <https://www.meister.com/en/advice/expertise/paint-panels.html>



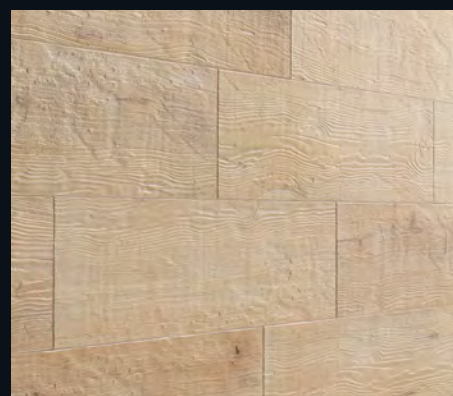
No wall or ceiling design is complete without the perfect final touch! There are colour-coordinated and easy-to-install cover mouldings available for every Meister-Panels. craft EP 500 surface – and of course made from real wood!





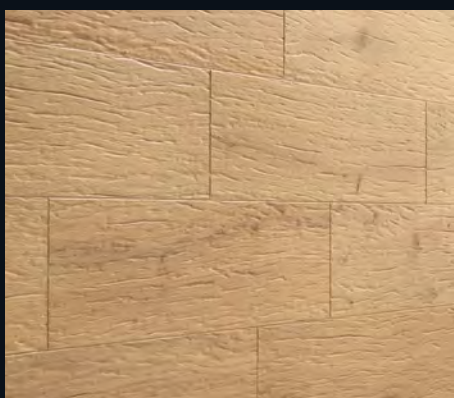
Real wood panels

MeisterPanels. craft EP 500



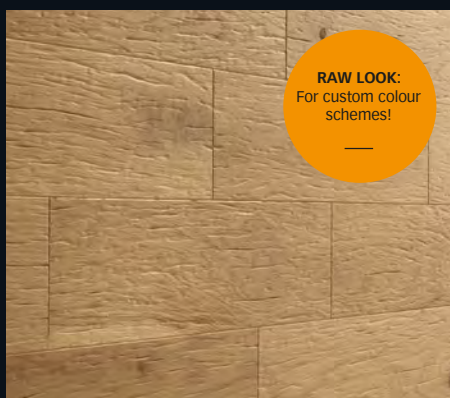
Cream oak 4302

Vintage structure, brushed | Naturally oiled



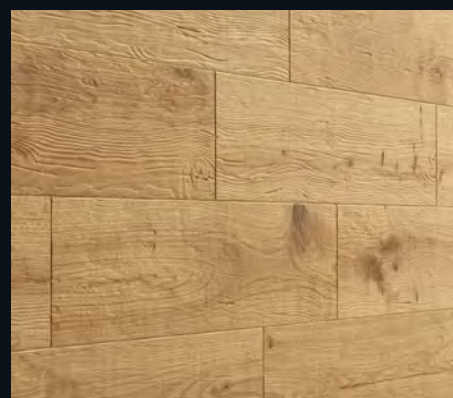
Pure oak 4303

Industrial wood structure, brushed | Naturally oiled



Raw oak R34

industrial wood structure, brushed



Natural oak 4301

Vintage structure, brushed | Naturally oiled



Steam oak 4305

Industrial wood structure, brushed | Naturally oiled



Old denim oak 4304

Vintage structure, brushed | Naturally oiled



















Decorative panels

MeisterPanels. terra DP 250 | DP 200

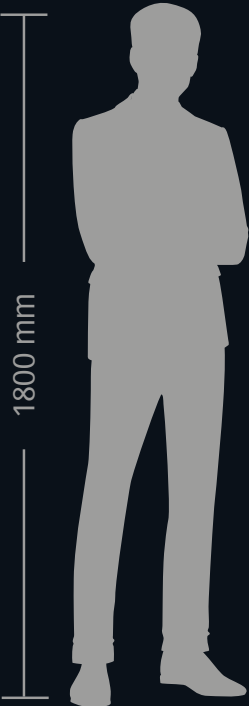
MeisterPanels. bocado DP 300 | DP 250 | DP 200

MeisterPanels. tertio DP 250 | DP 200



Collections overview

Decorative panels



Decorative panels MeisterPanels. terra DP 250
250 × 1280 | 2050 | 2600 | 3300 | 4100 × 12 mm



Decorative panels MeisterPanels. terra DP 200
200 × 1280 | 2050 | 2600 | 3300 | 4100 × 12 mm



Decorative panels MeisterPanels. bocado DP 300
300 × 1280 | 2600 × 12 mm



Decorative panels MeisterPanels. bocado DP 250
250 × 1280 | 2050 | 2600 | 3300 | 4100 × 12 mm



Decorative panels MeisterPanels. bocado DP 200
200 × 1280 | 2050 | 2600 | 3300 | 4100 × 12 mm



Decorative panels MeisterPanels. tertio DP 250
250 × 1280 | 2600 × 9.5 mm



Decorative panels MeisterPanels. tertio DP 200
200 × 1280 | 2600 × 9.5 mm



Decorative panels MeisterPanels. terra

Healthy living premium panels with anti-mould effect

Wall and ceiling design using panels opens up creative horizons. With MeisterPanels. terra, extremely attractive invisible features complement their beautiful look. We find that when it comes to materials for your own four walls, the internal properties are always important too. And in the terra collection they are particularly impressive – the specially developed Terragen base board is practically formaldehyde-free and especially suited to healthy living. Together with the special Terracell surface, MeisterPanels. terra are unbeatable – even the dreaded mould is no match for them! Matching recessed lights will complete your panelled wall or ceiling – the MeisterPanels. terra collection is heat resistant up to 110° C for all recessed lights with the MM test mark.

Decorative panels

MeisterPanels. terra



MeisterPanels. terra DP 250

- | Tongue and groove panel in discrete invisible joint look
- | With milled, finished head
- | Terracell covered
- | Terragen base board
- | Suitable for humid rooms

- | Blue Angel
- | Thickness: 12 mm
- | Width: 250 mm
- | Lengths: 1 280 | 2 050 | 2 600 | 3 300 | 4 100 mm

MeisterPanels. terra DP 200

- | Tongue and groove panel in invisible joint look
- | With milled, finished head
- | Terracell covered
- | Terragen base board
- | Suitable for humid rooms

- | Blue Angel
- | Thickness: 12 mm
- | Width: 200 mm
- | Lengths: 1 280 | 2 050 | 2 600 | 3 300 | 4 100 mm



www.blauer-engel.de/uz176



**MADE
IN
GERMANY**

Practically formaldehyde-free:

The Terragen base board

The MDF base material Terragen was developed exclusively for high-quality MEISTER decorative panels. Terragen boards are particularly low in emissions and, due to their special binding agent, practically formaldehyde-free – a big plus when it comes to sustainability and healthy living! This was confirmed by independent testing authorities.

Absolutely authentic:

The Terracell surface

Terracell is a PVC- and plasticiser-free surface on a polypropylene basis – and in appearance and quality, is hardly distinguishable from a real wood surface. Thanks to water and steam resistance, all Terracell coated panels are extremely easy to clean, durable and tough as well as suitable for humid rooms and washable!

Proven anti-mould effect

Terracell and Terragen make a good team: when they join forces, mould doesn't stand a chance! Thanks to their special product structure, MeisterPanels. terra decorative panels have a proven anti-mould effect and can therefore easily be used in bathrooms.

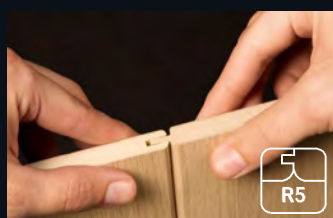
An elegant transition: The invisible joint

With MeisterPanels. terra, invisible joints come into play – either in more distinct or discrete forms, depending on the collection.



Discrete invisible joint (DP 250)

The discrete, rounded invisible joint fits in harmoniously with the overall image.



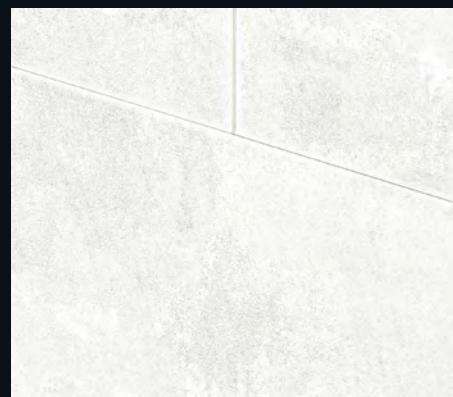
Invisible joint (DP 200)

The more distinct invisible joint makes for clear differentiation between individual panel elements and thus helps create a varied appearance.

Decorative panels

MeisterPanels. terra

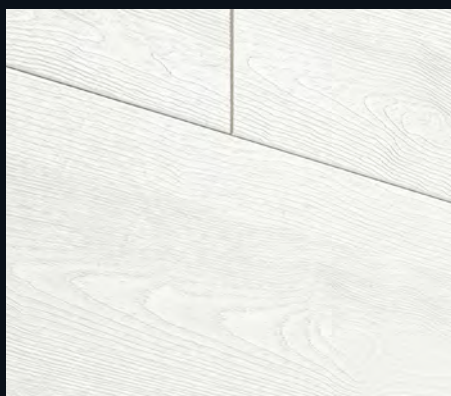
DP 250 | DP 200



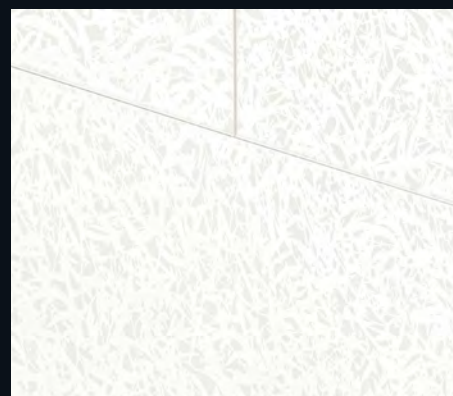
White cloud 4202 | Decor



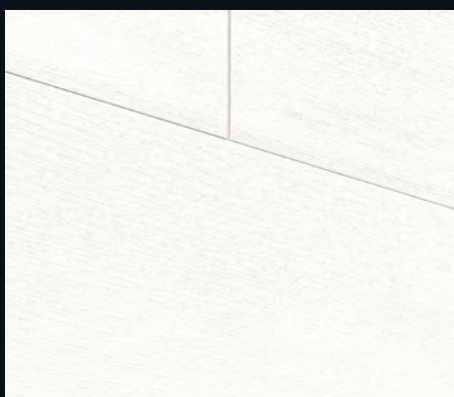
White ridge oak 4200 | Wood effect



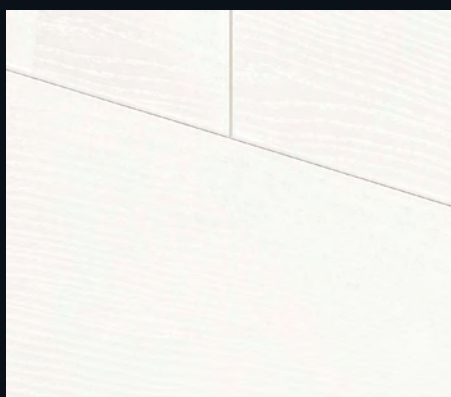
White mountain wood 4205 | Wood effect



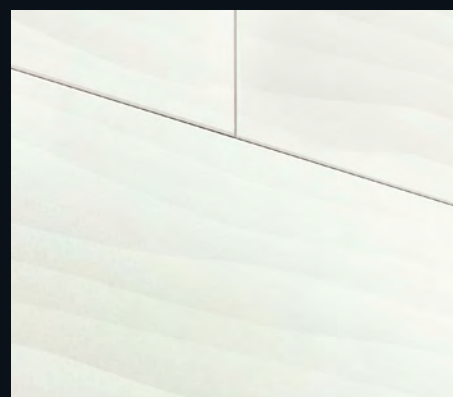
Duo gloss white 4089 | Decor



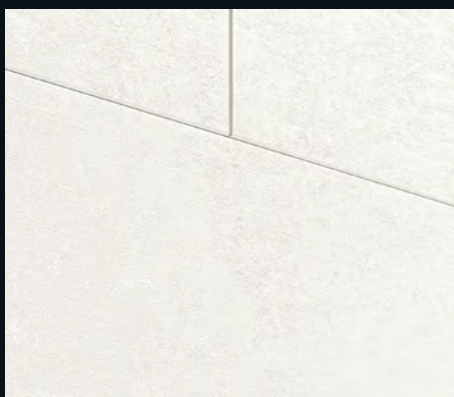
Fineline white 4017 | Decor



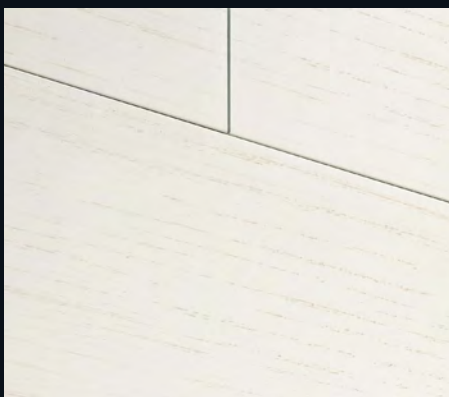
Classic white 087 | Wood effect



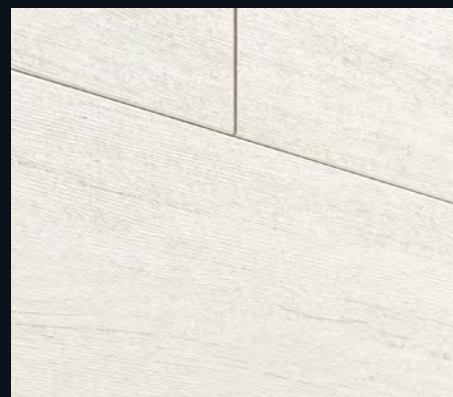
White vision 4203 | Decor



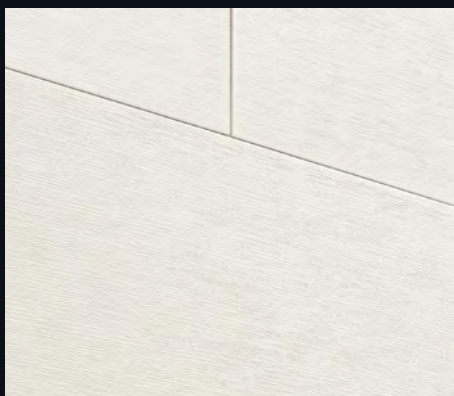
White vintage 4091 | Decor



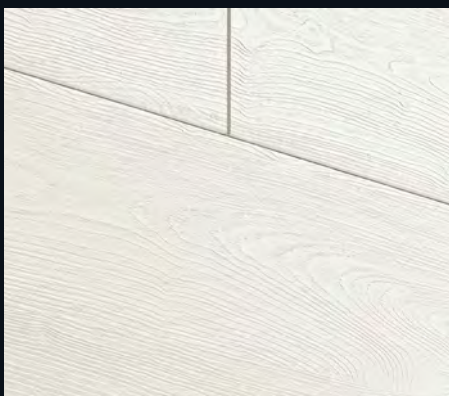
Delgado ash 167 | Wood effect



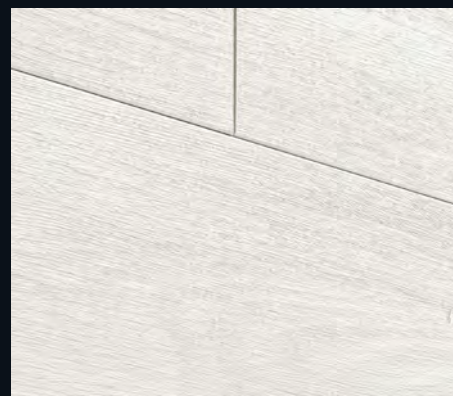
White pine 4088 | Wood effect



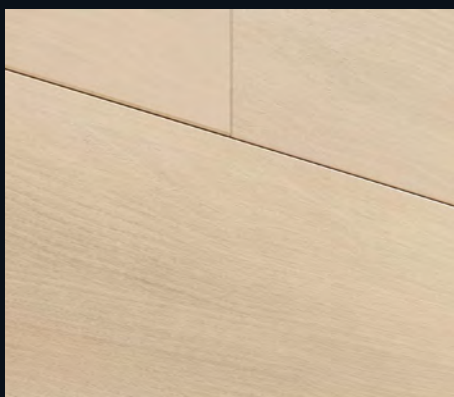
White ridge oak 4201 | Wood effect



Grey mountain wood 4204 | Wood effect



Corona 4087 | Decor



Light acacia 4012 | Wood effect



DP 250



DP 200



















Decorative panels

MeisterPanels. bocado

Great variety of wall and ceiling designs

MeisterPanels. bocado decorative panels suit any room and enhance its appearance. They are ideal for loft conversions and make a stylish interior design possible without laborious sanding, painting or wallpapering. A plus point of this type of wall and ceiling cladding is that it prevents the development of settlement cracks, and your walls and ceilings stay beautiful for a long time as a result. Depending on your chosen decor, the panels appear elegantly reserved or make a strong statement! In combination with modern recessed lights (with the MM test mark) this design solution is just perfect! The panels from the bocado collection are heat resistant up to 110° C.

MeisterPanels. bocado DP 300 | DP 250



MeisterPanels. bocado DP 300

- | Tongue and groove panel with 3 mm shadow joint
- | 1-person installation system
- | With milled, finished head
- | Covered with decorative film
- | MDF base board E1
- | Suitable for humid rooms
- | Fixing without profile clamps possible using the MEISTER special screws no. 20
- | Thickness: 12 mm
- | Width: 300 mm
- | Lengths: 1 280 | 2 600 mm

MeisterPanels. bocado DP 250

- | Tongue and groove panel in discrete invisible joint look
- | 1-person installation system
- | With milled, finished head
- | Covered with decorative film
- | MDF base board E1
- | Suitable for humid rooms
- | Fixing without profile clamps possible using the MEISTER special screws no. 20
- | Thickness: 12 mm
- | Width: 250 mm
- | Lengths: 1 280 | 2 050 | 2 600 | 3 300 | 4 100 mm
- Product protected by patent EP 2 530 218

MeisterPanels. bocado DP 200



MeisterPanels. bocado DP 200

- | Tongue and groove panel in invisible joint look
- | With milled, finished head
- | Covered with decorative film
- | MDF base board E1
- | Suitable for humid rooms
- | Thickness: 12 mm
- | Width: 200 mm
- | Lengths: 1 280 | 2 050 | 2 600 | 3 300 | 4 100 mm



www.blauer-engel.de/uz176



**MADE
IN
GERMANY**

Simply select

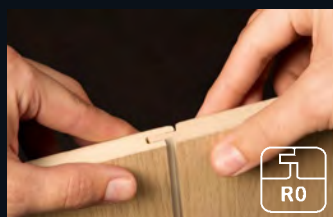
All 14 bocado decors are available in three different widths (30, 25, 20 cm) and different lengths – so everyone can find the perfect panel to fit their room!

Simply installed

You can install MeisterPanels. bocado in the widths 25 and 30 cm without any additional help thanks to the practical 1-person installation aid. This innovative principle makes work considerably easier and can be conveniently carried out by just one person: the panel can be quickly and securely fixed in the right position thanks to a click mechanism that prevents it slipping out of the groove, whilst still allowing it to be moved lengthways. For panels measuring 3.30 metres or more, we recommend a two man installation.

Simply versatile

An elegant shadow joint, a super subtle or a slightly more distinct invisible joint? Depending on the Bocado collection, there are three different types of joint to choose from!



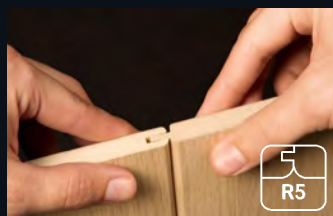
Shadow joint (DP 300)

The straight, angular shadow joint with a width of 3 mm sets a clear accent and makes the wall or ceiling design appear modern and elegant.



Discrete invisible joint (DP 250)

MeisterPanels. bocado with a width of 250 mm have a discrete, rounded invisible joint that fits in harmoniously with the overall image.



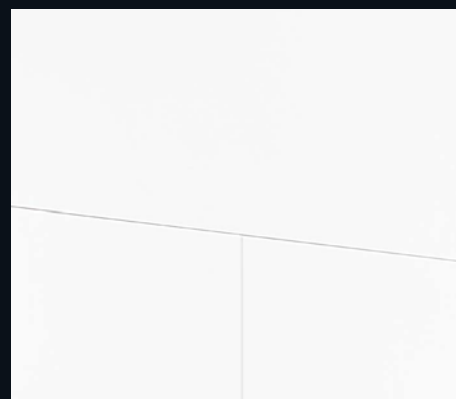
Invisible joint (DP 200)

The more distinct invisible joint from the MeisterPanels. bocado DP 200 collection makes for clear differentiation between individual panel elements and thus helps create a varied appearance.

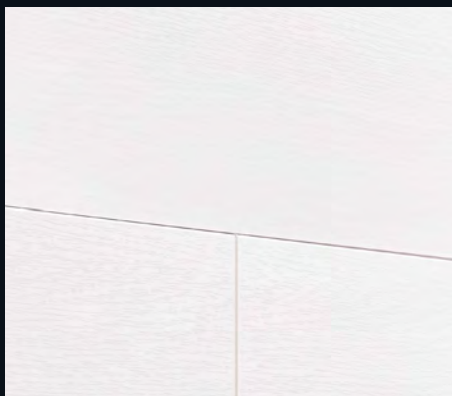
Decorative panels

MeisterPanels. bocado

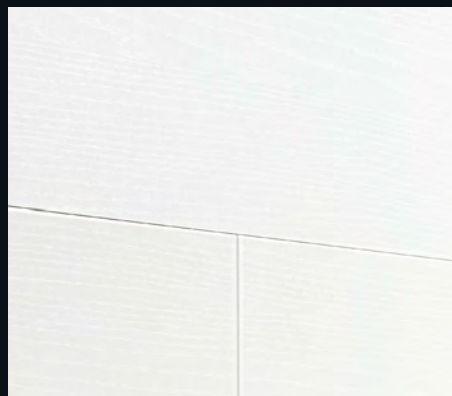
DP 300 | DP 250 | DP 200



High-gloss white 4084 | Decor



Whiteline 4074 | Decor



Classic white DF 387 | Wood effect



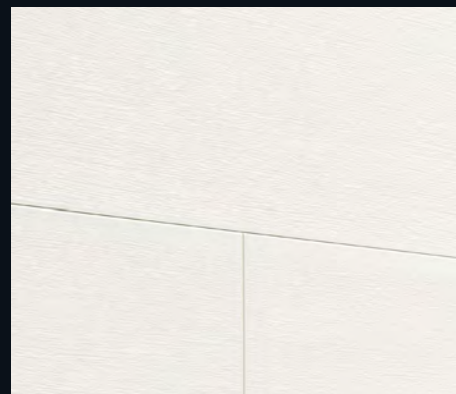
Plain white gloss DF 324 | Decor



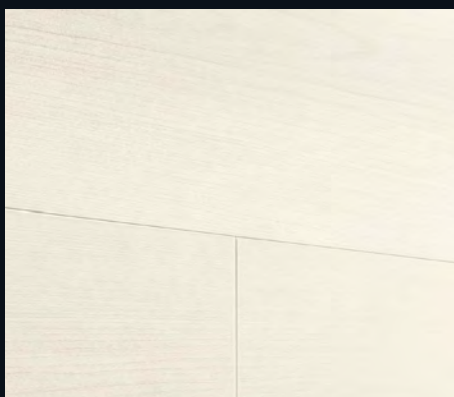
Silver stripe 4021 | Decor



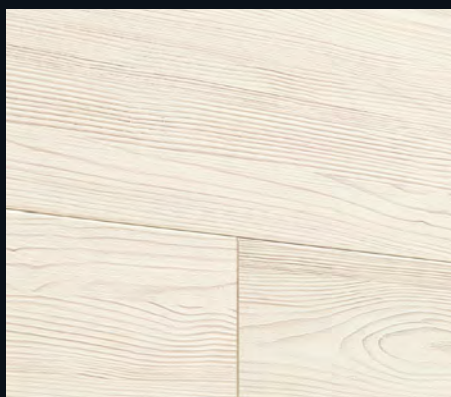
Silver ash 330 | Wood effect



Fineline white 4029 | Decor



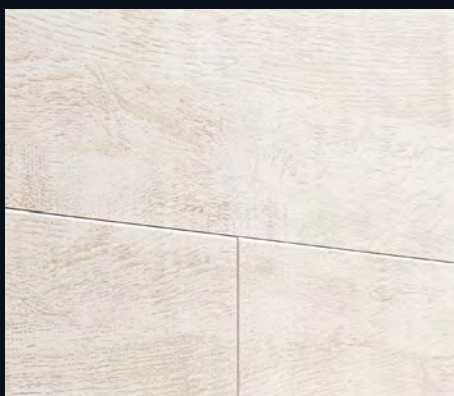
Trentino maple 328 | Wood effect



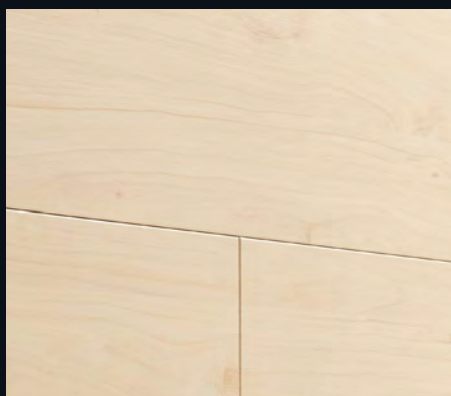
Light pine 4093 | Wood effect



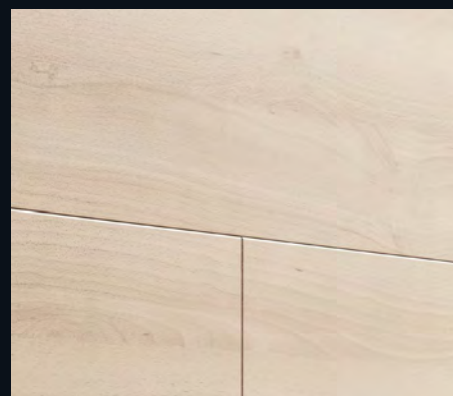
Opaque white oak 4069 | Wood effect



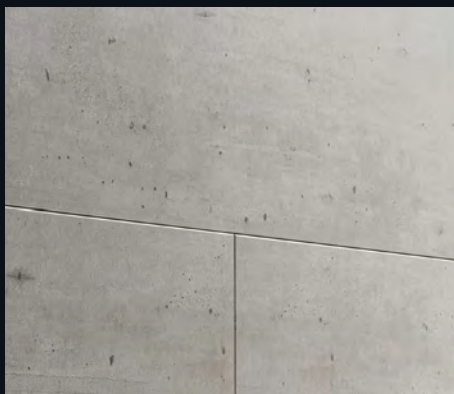
White vintage oak 4075 | Wood effect



Light maple 4003 | Wood effect



Pure beech 4094 | Wood effect



Concrete 4045 | Imitation



DP 300



DP 250



DP 200















Decorative panels

MeisterPanels. tertio

**Uncomplicated all-round panels for
modern wall and ceiling design**

MeisterPanels. tertio is the uncomplicated basic collection in MEISTER's panel range with its four modern decors in two widths and two lengths respectively. The quality decorative film on the overall 9.5 mm thick panels is especially colourfast. You can even use recessed lights, too!

MeisterPanels. tertio DP 250



MeisterPanels. tertio DP 250

- | | |
|---|---------------------------|
| Tongue and groove panel in invisible joint look | MDF base board E1 |
| With milled, finished head | Thickness: 9.5 mm |
| Suitable for humid rooms | Width: 250 mm |
| Covered with decorative film | Lengths: 1 280 2 600 mm |

MeisterPanels. tertio DP 200



MeisterPanels. tertio DP 200

- | | |
|---|---------------------------|
| Tongue and groove panel in invisible joint look | MDF base board E1 |
| With milled, finished head | Thickness: 9.5 mm |
| Suitable for humid rooms | Width: 200 mm |
| Covered with decorative film | Lengths: 1 280 2 600 mm |



High quality and sustainable

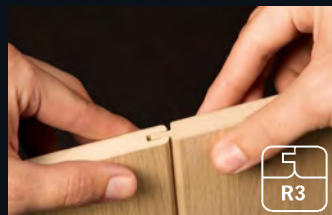
Like all MEISTER panels, the tertio collection is also 100% made in Germany – this guarantees quality raw materials and processing as well as a particular focus on sustainability and ecology!

Suitable for recessed lights

By installing recessed lights, the panels become a clever and multifunctional furnishing solution! MeisterPanels. tertio are heat resistant up to 110° C and are suitable for all recessed lights with the MM test mark.

Stylish invisible joint look

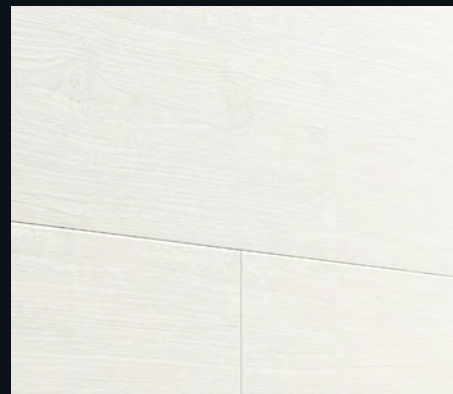
The rounded invisible joint provides a varied yet harmonious panel installation pattern.



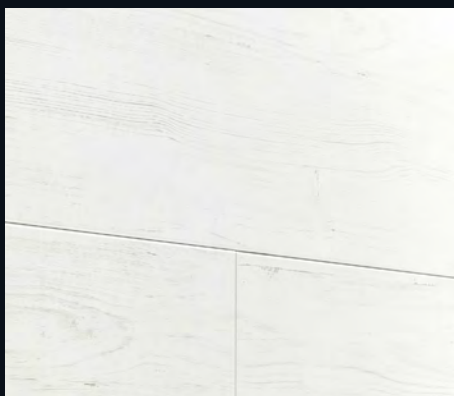


Decorative panels

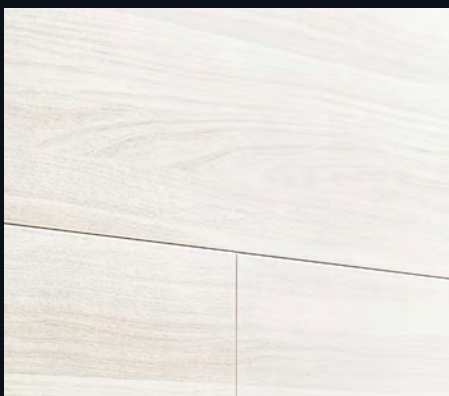
MeisterPanels. tertio DP 250



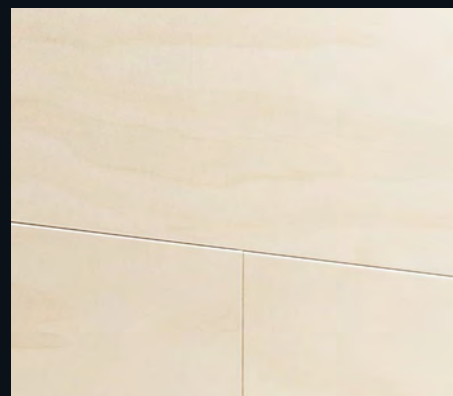
Arctic white pine 4099 | Wood effect



Vintage timber 4098 | Wood effect



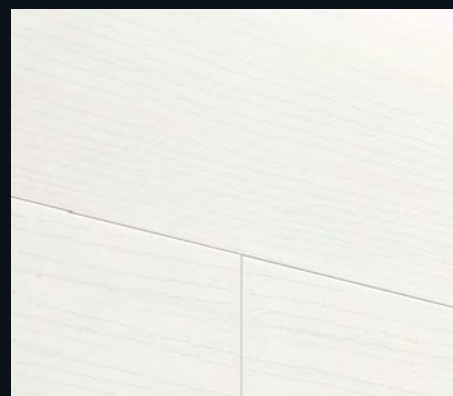
Grey ash 4097 | Wood effect



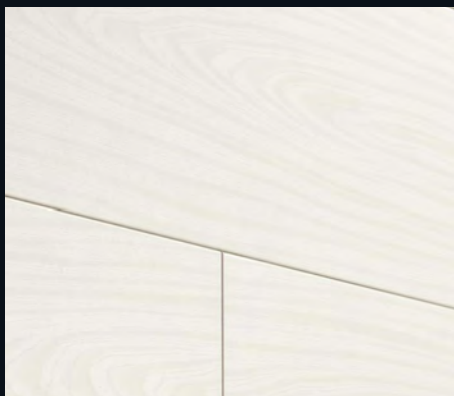
Lightwood 4096 | Wood effect

Decorative panels

MeisterPanels. tertio DP 200



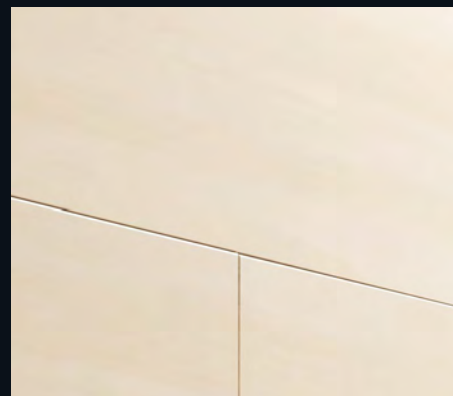
Alpine white ash 384 | Wood effect



Pearl white ash 382 | Wood effect



Cream pine 385 | Wood effect



Lightwood 4096 | Wood effect







When the floor goes up the walls: Wall design with MeisterParquet. longlife and Lindura® wood flooring

Is that still the floor? Or is it the wall? Lines blur when MEISTER takes flooring vertical. How does it work? Amazingly simply! A simple system of metal rails and fixing clips ensures that real wood flooring also cuts a fine figure on the wall – and that either as a continuation of the flooring or as its own design statement that attracts all the attention. Real life in the third dimension!

You can spruce up your walls with Lindura wood flooring as well as anything from the MeisterParquet. longlife collections (apart from the herringbone collections PS 500 and PS 400).







Accessories

With MEISTER, you can be sure that everything goes together, because here you'll find the right accessories all in one place. With our precisely fitting brackets and special screws, MEISTER panels are installed in no time at all. A diverse range consisting of various panel mouldings make for stylish finishes and transitions. And those looking to give their walls and ceilings an extra special function or feel should go for energy-saving LED lights!

Visit www.meister.com to see the complete range.



1

2

6

3

4

5

NEW**NEW**

Matching angled cover moulding
and cover moulding for
MeisterPanels. craft EP 500

Matching angled cover moulding
and self-adhesive cover moulding
for MeisterPanels. style SP 800

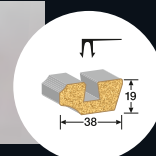
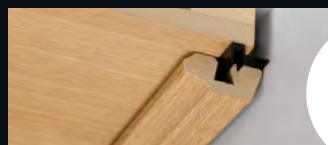
Panel mouldings for the perfect interior finish

Installing panels from MEISTER is a simple matter. To make sure that your corners, ends and transitions are all perfect, MEISTER offers the perfect accessory programme – from cover mouldings to corner mouldings.

1

Ceiling edging

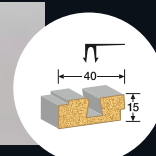
Ceiling edging guarantees clean edging for walls and ceilings.



2

Square shaped ceiling edging

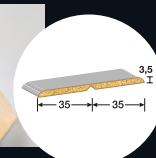
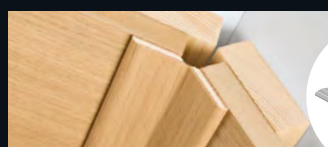
The straightforward lines of the square shaped ceiling edging make it look particularly modern.



3

Hinged moulding strip

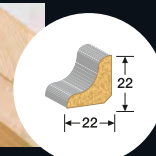
The hinged moulding strips are ideal for all corner solutions between 10° and 270°, such as sloping ceilings or internal corners.



4

Scotia moulding

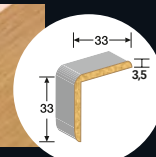
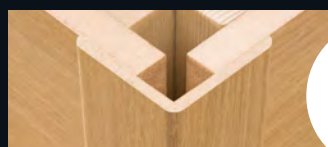
Scotia moulding can be used in a variety of ways, including as a corner connection with wood panelling and as a skirting board.



5

Corner moulding

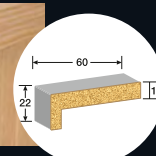
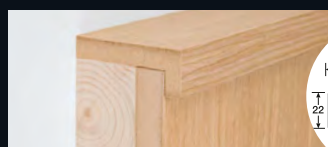
Corner mouldings are the ideal corner joints for 90° external corners. They can be attached in combination with wood panelling or inserted in the groove.



6

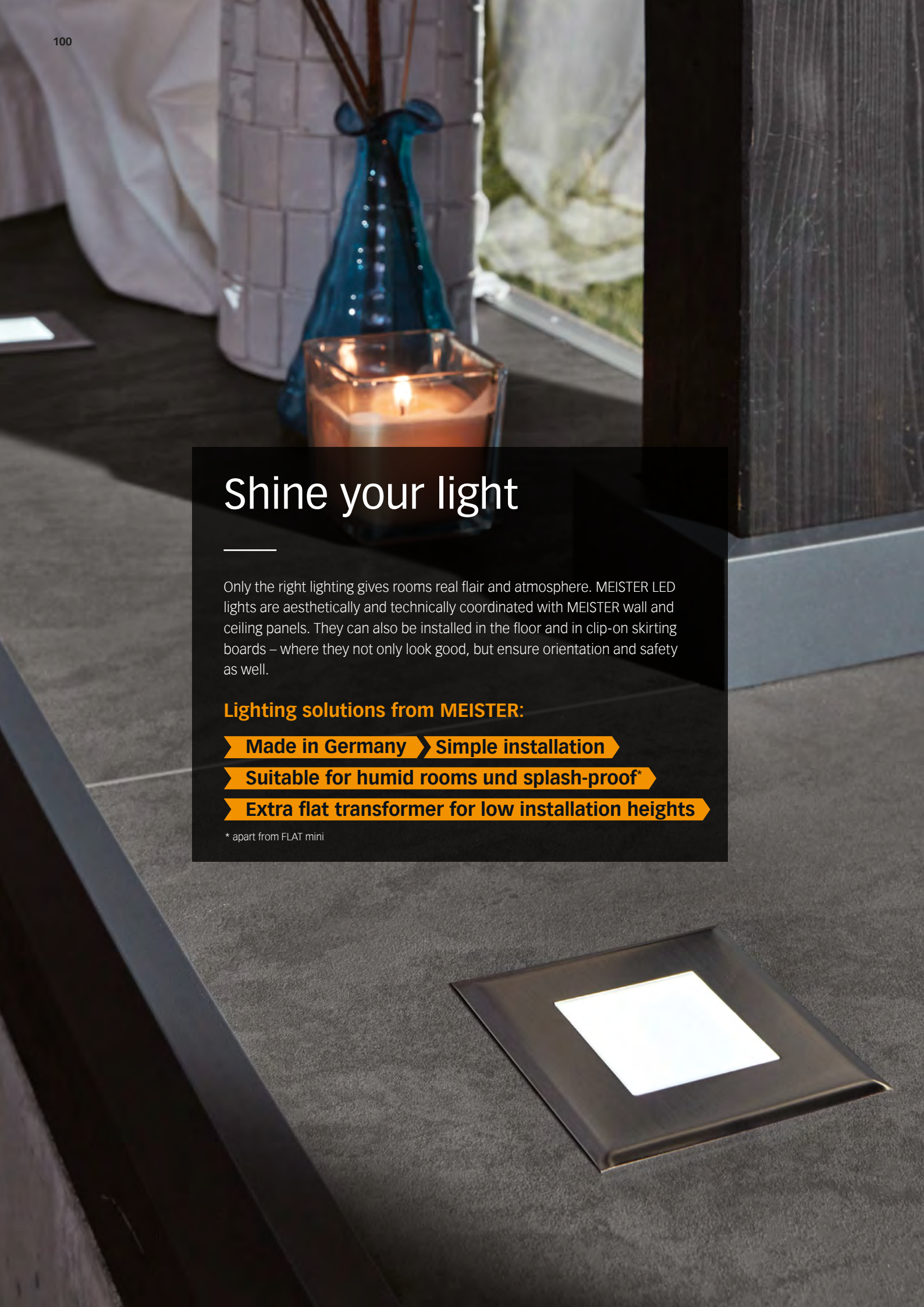
Angled cover moulding

The cover moulding is the perfect finish for many areas in interior design, including stairwells, half-height wood panelling, door panelling, roof windows and the edges of ceiling panels that are not laid wall to wall.



External corners, internal corners and the like: You can find the right mouldings accessory for you at www.meister.com





Shine your light

Only the right lighting gives rooms real flair and atmosphere. MEISTER LED lights are aesthetically and technically coordinated with MEISTER wall and ceiling panels. They can also be installed in the floor and in clip-on skirting boards – where they not only look good, but ensure orientation and safety as well.

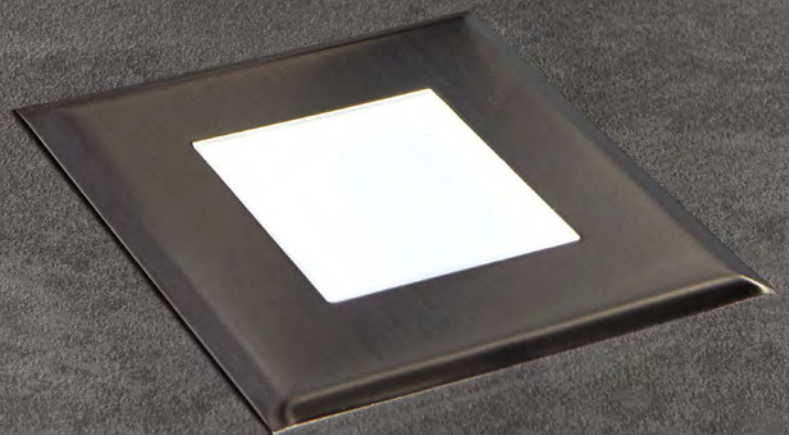
Lighting solutions from MEISTER:

Made in Germany > **Simple installation**

Suitable for humid rooms und splash-proof*

Extra flat transformer for low installation heights

* apart from FLAT mini



LED – beautiful and practical too

MEISTER LED lighting is more than just a decorative light source. Thanks to its extremely low energy consumption, it can also be used as orientation lighting – for example, in the bedroom or the hallway. This keeps any potential trip hazards in plain sight. The LED recessed lights are not only economical – they are extremely compact! This means they can easily be installed in narrow panel walls.

Walls and ceilings



LV LED downlight
Big Shot Quadro | 7.5 watts | Set of 2



LV LED downlight
Big Shot | 7.5 watts | Set of 2



LV LED downlight
Shot Quadro | 3.4 watts | Set of 4



LV LED downlight
Shot | 3.4 watts | Set of 4

This light includes fitted LED bulbs.



The bulbs in the light cannot be replaced.

Walls, ceilings and skirting boards



LV LED recessed lights
FLAT mini | 0.4 watts | Set of 2

Flooring and walls



LV LED recessed light
FLAT Quadro | 0.4 watts



LV LED recessed light
FLAT Punto | 0.4 watts

This light includes fitted LED bulbs.



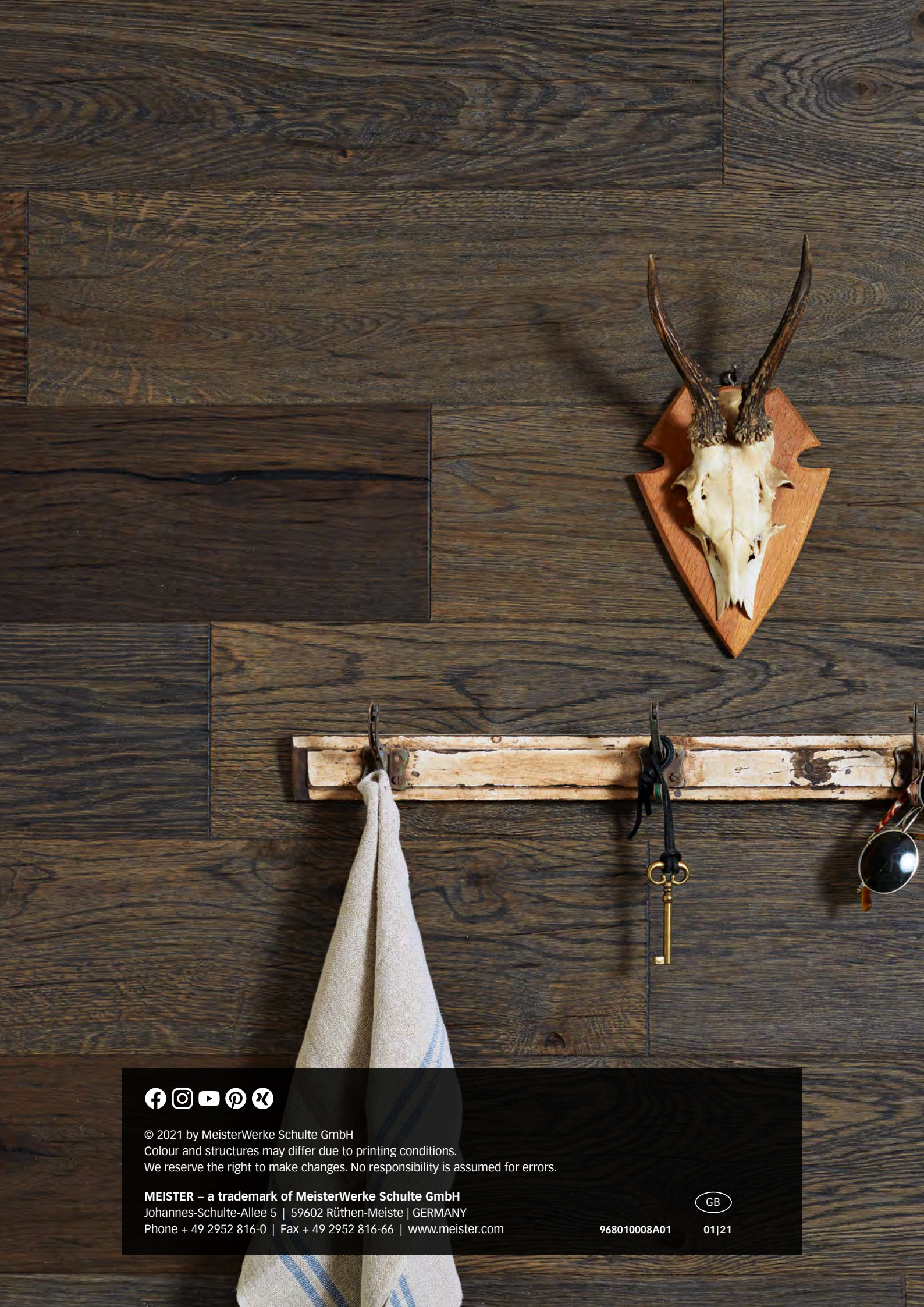
The bulbs in the light can be replaced.

All FLAT LV LED recessed lights are ideal for use as orientation lighting, e.g. in bedrooms and hallways, as a result of their low energy consumption.





MeisterPanels. craft EP 500 | Cream oak 4302 | Vintage structure, brushed | Naturally oiled
MeisterPanels. style SP 800 | Olive felt 4511



© 2021 by MeisterWerke Schulte GmbH
Colour and structures may differ due to printing conditions.
We reserve the right to make changes. No responsibility is assumed for errors.

MEISTER – a trademark of MeisterWerke Schulte GmbH
Johannes-Schulte-Allee 5 | 59602 Rüthen-Meiste | GERMANY
Phone + 49 2952 816-0 | Fax + 49 2952 816-66 | www.meister.com

GB

968010008A01

01|21